

AGCOMS INTERNATIONAL  
TRADING LIMITED

# CORPORATE PROFILE



## Corporate Overview

Incorporated in 2021 and headquartered in Abuja, Nigeria, AGCOMS International Trading Limited is a dynamic and forward-thinking company. With a robust international network of experts across the Agricultural, Construction, Forestry, and Mining industries, we have rapidly established ourselves as a significant player in these sectors.

Agcoms secured its John Deere Dealership under Tata International in 2024. The Agcoms Team is responsible for the Sales, Repairs and maintenance of John Deere equipment running in its AOR (Nigeria). Beside the John Deere brand, the Agcoms Team also distribute the Fieldking and Rovic products.

Agcoms International Trading Company Limited will be the Preferred **Dealer For Agricultural Equipment Company in the Country**

# Table of Contents

Corporate Overview	2
Leadership and Expertise	4
Diverse Product Offering	5
Commodity Trading Division	6
Special Project Division	7
Sustainability and Community Focus	8
Health, Safety, and Environment (HSE) Commitment Statement	10
Management Team	13
Brand we Source	19
Initiatives Activated by the Team	25
Obudu, Cross River State Airport Project - Equipment Sold and Managed by Team	30
SMART Campaign Launch - Gwagwalada, Abuja Nigeria	31
SMART Farm Harvest - Gwagwalada, Abuja Nigeria	33
360 Tractors NECAS Tractors commissioning Event - Jimeta, Yola Adamawa State	34
50 Female Tractor Operator Training - Alluvial and MasterCard Foundation	35
2nd unit of C120 Delivery to Pally Agro Farm - Ogun State, Nigeria	37
Team, AGRA, USAID organized event - Mechanization Round table discussion with major Service Providers - TOOAN, TOHFAN, AFRIMECH, AGROPRO, SCAGRIC, PSALTRY, AGRIDRIVE, others	38
Keynote delivery at the West Africa Agro Fair - Abuja Chamber of Commerce, Nigeria	39
Operators Training for Hello Tractor Abuja, Nigeria	40
Field Service Event, Panda Agric Farm- Novum, Nasarawa State	42
Key Projects under our service	43





# Equipment **Division**

AGCOMS International provides a wide range of equipment and services **under five distinct categories:**

## **Agricultural & Forestry Equipment:**

High-efficiency machinery for the agriculture and forestry sectors.

## **Golf & Turf Equipment**

Advanced solution for golf courses and turf management.

## **Power**

Innovative power solutions tailored to diverse industry needs.

## **Construction & Mining Equipment**

Robust and reliable equipment for construction and mining projects

## **Commercial Vehicles:**

A versatile range of commercial vehicle for various applications.

# Commodity Trading **Division**

We have a specialized Commodity Trading Division, divided into:



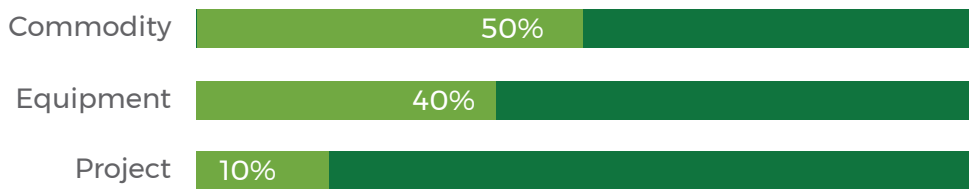
**How we keep the bond **strong**, is probably the answer of how we could be good at what we do.**

- 1. Agricultural Commodities:**  
Including Rice, Sesame, Wheat, Maize, Soya, and Hibiscus, with a focus on import and export operations.
- 2. Minerals Division:**  
Trading in Agro-chemicals, Industrial chemical, fertilizers, and soil boosters.

# Special Project Division

Our special Project Division handles large-scale projects in Agriculture, Construction, and Mining, leveraging our access to world-leading equipment brands to deliver top-tier service. The projects division is responsible for various empowerment programs around Youth engagement in agriculture and the upliftment of our farmers knowledgebase on best practices. This divisions goal is centered around Youths, Farmers, Community and use of Technology to bridge the gap.

## AGCOMS Portfolio Spread



# Sustainability and Community

## Focus

Sustainability is at the core of our business ethos.

We pride ourselves on conducting business in a way that positively impacts our host communities, ensuring environmental sustainability and fostering local development.

### Our Vision



Our vision is to be a beacon of innovation and quality within our industries, illuminating the path forward with groundbreaking solutions and superior products. We are steadfastly committed to integrity, ensuring that every decision and action uploads the highest ethical standards, fostering trust and respect among our stakeholders. Excellence is at the core of our identity, driving us to surpass ordinary standards and consistently deliver exceptional result.

Above all, we are dedicated to a relentless pursuit of customer satisfaction, actively listening to their needs and exceeding their expectations. By adhering to these values, we not only lead but also inspire our industry and community, making a significant and positive impact on the world.

### Our Values



Innovation



Integrity



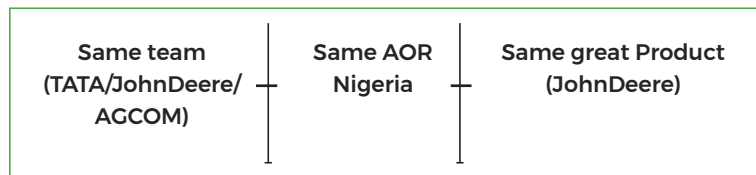
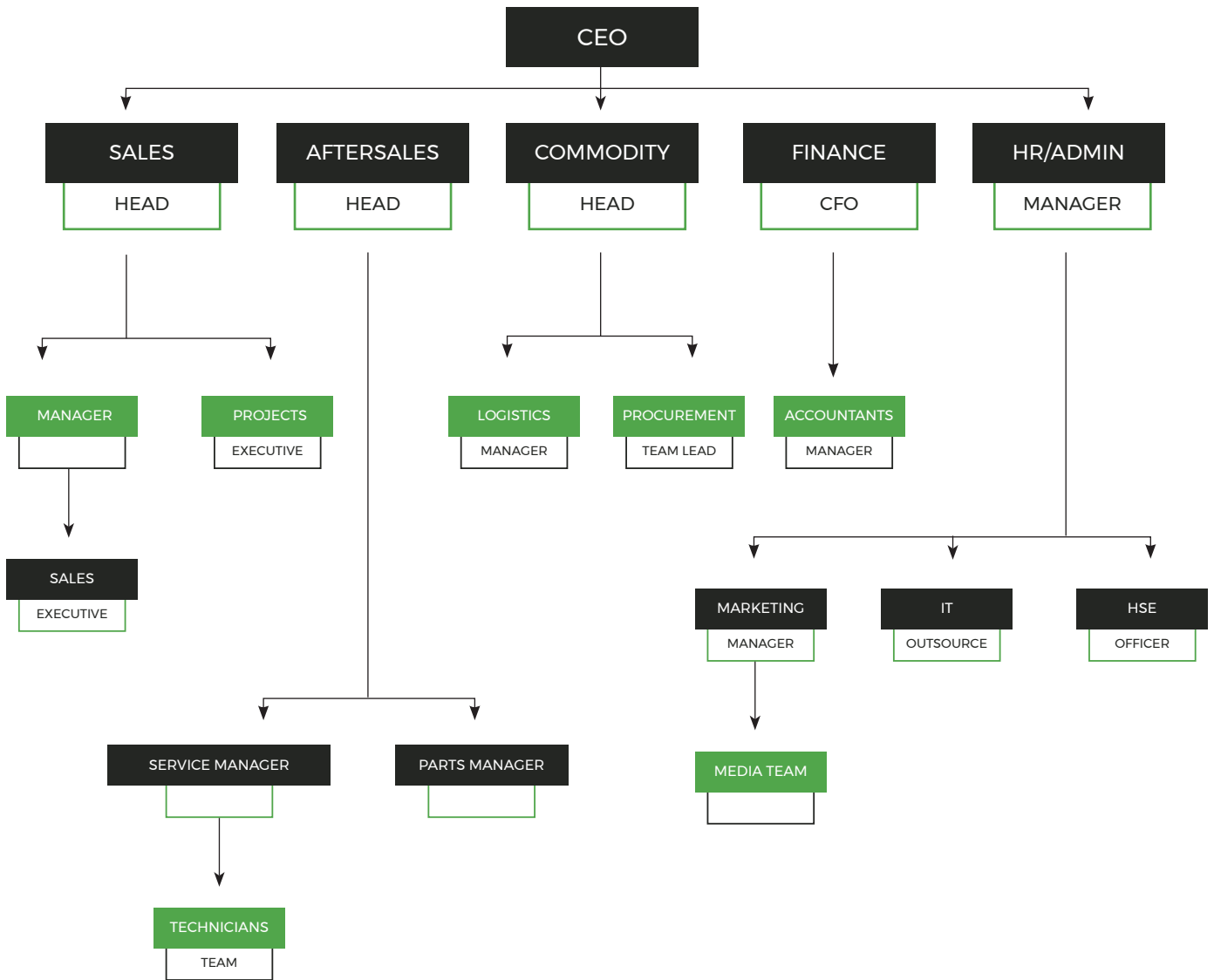
Quality



Customer Satisfaction







**One Mission**  
Still committed to those linked to the Land...

# Health, Safety, and Environment (HSE) Commitment Statement

At AGCOMS International Trading Limited, we are steadfast in our commitment to excellence in Health, Safety, and Environment (HSE) standards across all aspects of our operations and corporate practices.

Our dedication is driven by a fundamental respect for our people, communities, and the environment.

## Our Commitment



**Protection of Our People:** We prioritize the health and safety of our employees, contractors, and visitors in all our operations. We strive to create a work environment free from injuries and occupational illnesses through continuous trainings, rigorous safety protocols, and adherence to best practices.



**Environmental Stewardship:** We are dedicated to minimizing our environmental impact. This includes proactive measures to manage waste, conserve resources, and reduce emissions. We commit to ongoing improvement through the implementation of sustainable practices and compliance with environmental laws and standards.



**Compliance and Continuous Improvement:** AGCOMS International Trading Limited is Committed to not only complying with applicable HSE laws and regulations but exceeding them. We employ a systematic approach to HSE management designed to ensure compliance and facilitate continuous improvement through periodic review and adaption of our policies and procedures.



**Employee Engagement and Accountability:** Every employee at AGCOMS International Trading Limited has a role in implementing our HSE policies. We promote a culture of safety and environmental responsibility through active participation, ongoing education, and a clear accountability framework.



**Community and stakeholder Collaboration:** We engage with local communities and stakeholders openly and transparently to enhance HSE awareness, ensure public safety, and foster mutual respect and cooperation.

# Leadership Commitment

As leaders, we pledge to uphold these principles, provide the necessary resources, and lead by example in all HSE matters. We encourage every member of our team to join us in this vital commitment.

By integrating health, safety, and environmental considerations into all aspects of our business, we safeguard our future and affirm our responsibility to our employees, stakeholders, and the planet.





# Management Team

## Okoli Chijioke

### Chief Executive Officer

Okoli Chijioke is the majority shareholder and Chief Executive Officer of AGCOMS International Trading Limited. Bringing extensive international experience to his role, Okoli previously excelled as the Country Director for TATA International-Nigeria, where he significantly enhanced operational efficiencies and market penetration. A seasoned leader in the John Deere business for the past 15 years, his deep industry knowledge and strategic innovation. Okoli's commitment to excellence is further underscored by his participation in elite leadership programs at both Stanford and Harvard University, equipping him with cutting-edge management techniques and leadership insights.

His visionary approach and robust educational background empower him to steer AGCOMS International Trading Limited towards unprecedented success in the global market, fostering a culture of excellence and innovation within the team.

## Mohammed Halilu

### Chief Financial Officer

Mohammed Halilu is the Chief Financial Officer at AGCOMS International Trading Limited, where he spearheads the financial strategy and operations of the company. With over a decade of experience in finance and accounting, Mohammed has a proven track record of driving efficiency and growth in fast-paced environments. Prior to joining AGCOMS, he held several senior financial positions at Multinational Corporations, where he was instrumental in restructuring financial systems and implementing cost-saving measures. Mohammed is a Chartered Financial Analyst (CFA) and holds an MBA from a prestigious business school. His expertise in financial forecasting, risk management, and strategic investment has been pivotal in AGCOMS' expansion and profitability.

Mohammed is known for his analytical skills, leadership, and unwavering commitment to ethical financial practices, making him an asset to the executive team at AGCOMS International Trading Limited.

## Adekunle Uzoma

### Admin Manager

Adekunle Uzoma is the Admin Manager at AGCOMS International Trading Limited, where she expertly manages administrative operations and supports the company's strategic objectives. Adekunle transitioned from the sales Admin department at TATA International-Nigeria, bringing over 15 years of Administrative expertise to her role. Her 11-year tenure in the John Deere business has provided her with a deep understanding of the agricultural equipment industry, enhancing her ability to streamline operations effectively. Her responsibilities at AGCOMS include overseeing daily administrative functions, optimizing organisational processes, and ensuring that all departments align with corporate policies and standards.

Her proven track record in administration and her strategic approach have been crucial in improving efficiency and supporting AGCOMS' operational goals. Adekunle's leadership and meticulous attention to detail have made her an invaluable asset to the company, contributing significantly to its smooth and efficient operation.

## Obichie Felix

### National Sales Manager

Obichie Felix is the accomplished National Sales Manager at AGCOMS International Trading Limited, where he leads the company's sales strategies and drives market expansion efforts. Prior to his current role, he held the same position at TATA International-Nigeria, demonstrating a robust ability to boost sales figures and enhance team performance consistently.

With a decade of dedicated experience in the John Deere business, obichie has developed an in-depth understanding of the agricultural machinery market, which he leverages to meet the evolving needs of customers and stakeholders. His expertise encompasses strategic sales planning, team leadership, and customer relationship management, making him a pivotal figure in achieving AGCOMS' sales objectives.

Obichie's commitment to excellence and his proven track record in sales leadership continues to contribute significantly to AGCOMS International Trading Limited's growth and success in the competitive industry.

## Okeke Patrick

### National Aftersales Manager

Okeke Patrick is the National Aftersales Manager at AGCOMS International Trading Limited, where he masterfully oversees all post-sales services and customer support initiatives. Bringing over 35 years of experience in product support within the equipment industry, Patrick transitioned from his previous role as the National Aftersales Manager at TATA International- Nigeria, where he significantly enhanced customer satisfaction and service efficiency.

His decade-long dedication to the John Deere business has equipped him with unparalleled expertise in managing after-sales operations, particularly in agricultural and construction machinery. Known for his technical acumen and strategic leadership, Patrick excels in driving operational improvements, developing robust service programs, and leading high performing teams. His profound industry knowledge and commitment to excellence ensure that AGCOMS International Trading Limited maintains high standards of customer service and support, fostering long-term customer loyalty and reinforcing the company's market leadership.

## Florence Ubah

### Human resource

Florence Ubah serves as the Human Resource Manager at AGCOMS International Trading Limited, where she leverages over 20 years of HR expertise to enhance workforce management and organizational development. Prior to joining AGCOMS, Florence was a key member of the Human resource department at TATA International-Nigeria, where she implemented innovative HR strategies that significantly improved employee engagement and productivity. With 11 years of involvement in the John Deere business, she possesses a nuanced understanding of the specific HR needs in the agricultural and construction equipment sectors.

Florence's extensive experience includes talent acquisition, employee relations, and performance management. Her strategic vision and commitment to fostering a supportive and dynamic work environment have been instrumental in attracting and retaining top talent, thus driving AGCOMS International Trading Limited towards achieving its business goals and maintaining its reputation as an employer of choice in the industry.

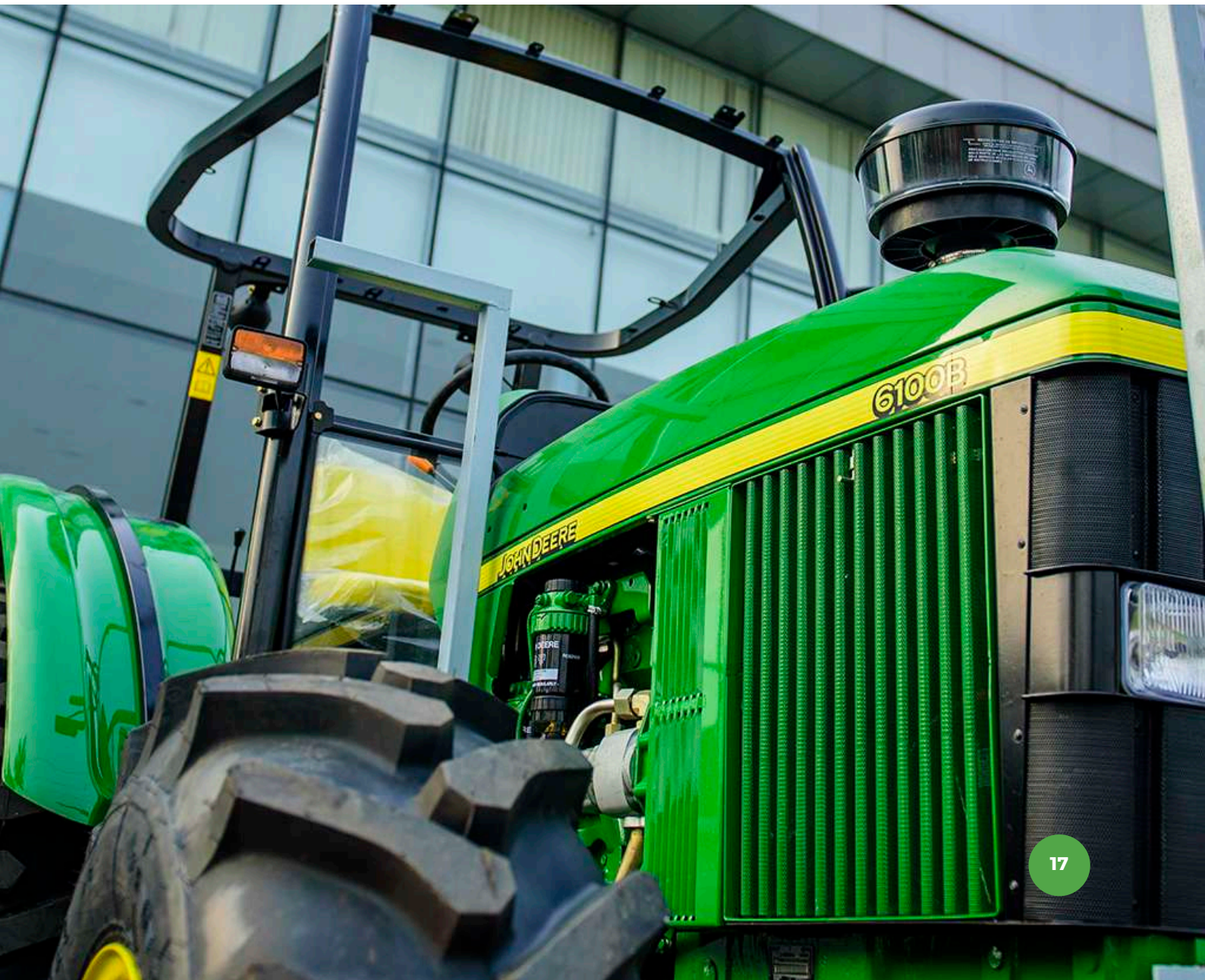


## Femi Jospeh

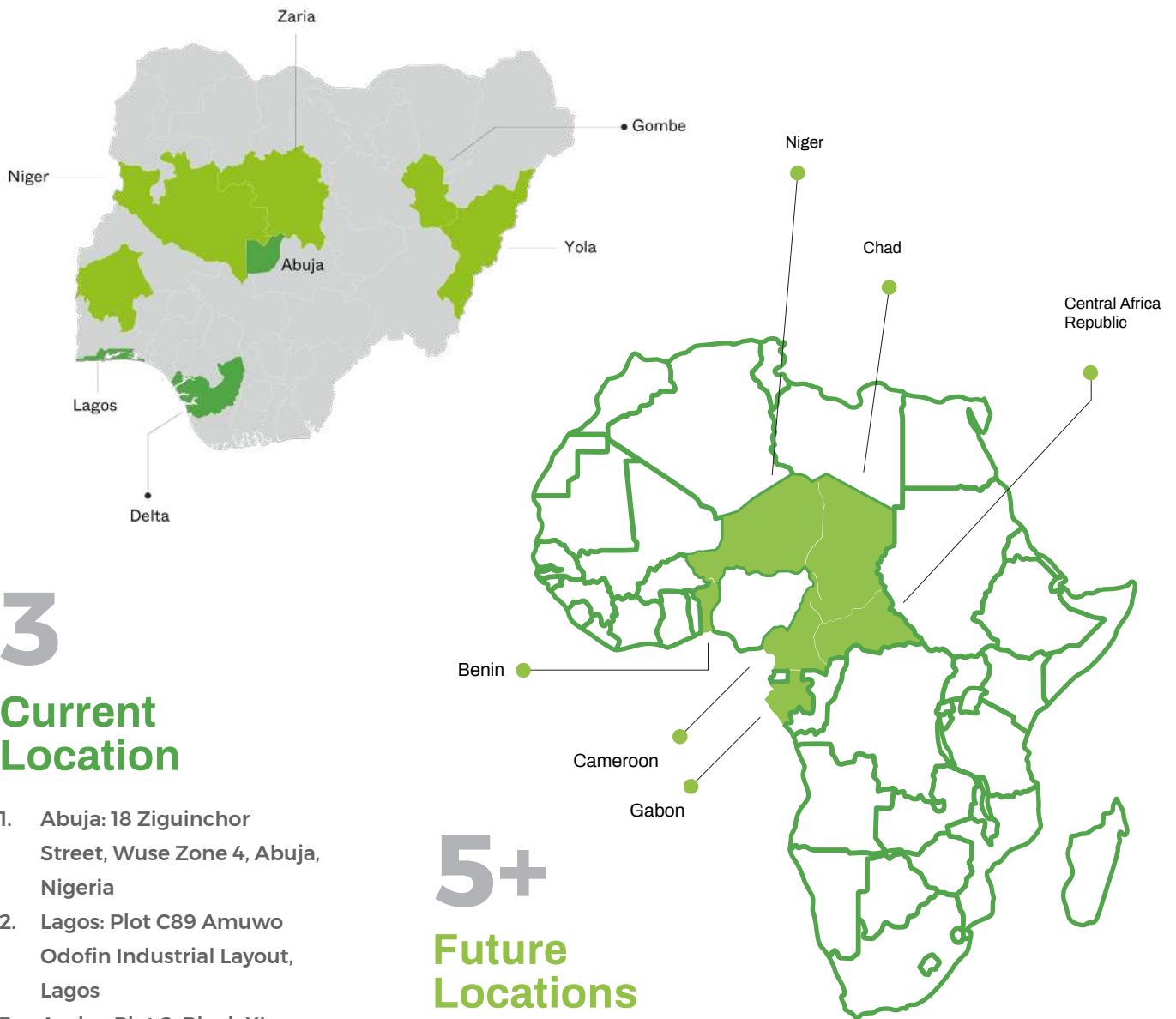
### Commodity Trading Manager

Femi Joseph is the National Sales Manager at AGCOMS International Trading Limited, where he leads the sales strategy and execution with outstanding expertise and commitment. Before assuming his current role, Femi served as the National Sales Manager at TATA International-Nigeria, where he demonstrated exceptional skill in expanding customer base and sales volumes, particularly in competitive markets. His extensive 10-year experience in the John Deere business has endowed him with deep insights into the agricultural machinery industry, which he leverages to drive sales and foster strong customer relationships.

Femi's proficiency includes strategic planning, team leadership and market analysis, making him a vital asset to AGCOMS' growth ambitions. His strategic initiatives and leadership have consistently resulted in significant sales achievements and market penetration, reinforcing AGCOMS International Trading Limited's position as a leader in the industry.



# Offices



## 3 Current Location

1. Abuja: 18 Ziguinchor Street, Wuse Zone 4, Abuja, Nigeria
2. Lagos: Plot C89 Amuwo Odofin Industrial Layout, Lagos
3. Asaba: Plot 2, Block XI, Phase V, Core Area, Asaba, Delta State

- Current Location
- Future Locations

## 5+ Future Locations

1. Zaria
2. Niger
3. Gombe
4. Yola
5. Ibadan
6. Cameroun
7. Chad
8. Central Africa Republic
9. Gabon
10. Benin and
11. Niger

# Brand we Source



**JOHN DEERE**

**FIELDKING**



**KLEEMANN**



**HAMM**



**CIBER**



**WIRTGEN**



**VÖGELE**



**KOHLER®**



# 5E SERIES

3 CYLINDER SERIES TRACTORS



JOHN DEERE

	5055E	5065E	5075E	5080E
<b>ENGINE</b>				
Rated power (97/68EC) hp (kW) @ 2400 engine rpm	57hp (42kW)	65hp (48kW)	75hp (55kW)	79hp (58.84 kW)
Maximum Torque, Nm	225 @ 1300	242 @ 1600	275 @ 1600	294 @ 1400
Torque Reserve, percentage (%)	20-25%			
PTO Power hp (kW) @ 2400 engine rpm	48 (35.8)	55 (41.0)	63 (46.9)	64.39 (47.7)
Aspiration	Turbo Charged			
Engine Manufacturer	John Deere Power Systems			
Engine Type (3 Cylinder), Displacement	2.9 L PowerTech, Turbo Charged Diesel Engine			
Fuel System	Rotary or Inline Fuel Injection Pump, Direct Injection			
Air Filter	Dry Type, Dual Element			
Cooling system	Liquid Cooled			
<b>TRANSMISSION</b>				
9F/3R Collarshift (CS) Transmission (with Dry Clutch)	OOS TWD / MFWD	OOS TWD / MFWD	OOS TWD / MFWD	N/A
9F/3R Top Shaft Synchronized (TSS) Transmission (with Dry Clutch)	OOS TWD / MFWD	OOS TWD / MFWD	OOS TWD / MFWD	OOS / CAB MFWD
12 / 12 PowrReverser (PR) Transmission (with Wet Clutch)	IOOS MFWD	IOOS MFWD	IOOS MFWD / CAB	OOS / CAB MFWD
<b>CLUTCH</b>				
Clutch	Dry Clutch (DC) /Wet Clutch (WC)			
<b>REAR AXLE</b>				
OOS/IOOS/Cab	Inboard Planetary Final Drives			
<b>FRONT AXLE</b>				
Variable track, heavy duty, 2WD Axle with Power Steering	OOS	OOS	OOS	N/A
Fixed, heavy duty MFWD Axle with Power Steering	OOS / IOOS / CAB	OOS / IOOS / CAB	OOS / IOOS / CAB	OOS / CAB
Differential Lock	OOS / IOOS / CAB	OOS / IOOS / CAB	OOS / IOOS / CAB	OOS / CAB
Turning Radius, meters (measured without front fenders)	4.3 w/o Brakes, 3.5 w/Brakes			
<b>STEERING</b>				
Type OOS/IOOS/CAB	Hydrostatic Power Steering			
<b>BRAKE</b>				
Type OOS/IOOS/CAB	Hydraulic Actuated Wet Disk Brakes - Self Adjusting			
Secondary Brake	Hand Brake			
<b>HYDRAULIC SYSTEM</b>				
System Type OOS/IOOS/CAB	Open Center Hydraulic System			
Steering Pump Total Flow (L/pm)	25,7			
Implement Pump (L/pm)	43,1			
Maximum No. of SCV's OOS/IOOS/CAB	1 x Double Acting - Rear Selective Control Valve			3 Rear SCV (2 STD & 1 Deluxe)
<b>ELECTRICAL SYSTEM</b>				
Alternator Size (A)	50 OOS / 110 CAB	50 OOS / 110 CAB	50 OOS / 110 CAB	90
Battery Size (Ah)	12V 88Ah	12V 100Ah	12V 100Ah	12V 100Ah
<b>3- POINT HITCH REAR</b>				
Category	3-Point (Category II) Hitch with Sway Chains			3-Point Cat II with Telescopic Stabiliser Bars
Lift Capacity at the ball (kgf)	1800			2350
<b>REAR POWER TAKE-OFF (PTO)</b>				
	OOS / IOOS / CAB	OOS / IOOS / CAB	OOS / IOOS / CAB	OOS / CAB
540 RPM Rear PTO	@ 2376 engine RPM	@ 2376 engine RPM	@ 2376 engine RPM	@ 2083 engine RPM
540E RPM Rear PTO	@ 1705 engine RPM	@ 1705 engine RPM	@ 1705 engine RPM	@ 1588 engine RPM
<b>OPERATOR STATION</b>				
OOS/IOOS (Open Operator Station & Isolated Open Operator Station)	X	X	X	OOS
CAB			X	X
Insytrument Panel	Integrated Dashbord Display			
<b>CAPACITIES</b>				
Fuel Tank (L)	68 OOS / 82 CAB			115 OOS / 125 CAB
<b>DIMENSIONS and WEIGHTS</b>				
Wheelbase (mm)	2050			
Ground clearance (mm), Center MFWD without front ballast	450 for 2WD / 350 for MFWD			
Tractor weight (kg) shipping weight no ballasting	2175 OOS 2WD / 2425 OOS MFWD / 3000 CAB MFWD			3232 OOS MFWD / 3800 CAB MFWD
Maximum permissible Gross Weight (kg)	3790			4600
<b>WHEELS and TIRES</b>				
Front Wheels 2WD	7.5X16 BKT	7.5X16 BKT	7.5X16 BKT	N/A
Front Wheels MFWD	9.5x24 BKT	9.5x24 BKT	11.2x24 BKT	320 / 85R24
Rear Wheels	14.9x28 BKT	16.9x28 BKT	16.9x30 BKT	460 / 85R30

This literature has been compiled for broad circulation in Africa Middle East. While general information, pictures and descriptions are provided, some illustrations and text may include finance

# 6B SERIES

TRACTORS



JOHN DEERE

# 6140B

## ENGINE PERFORMANCE

Rated Engine Power (97/68EC) hp (kW)	140 (103)
Max. Engine Power (97/68EC) hp (kW)	145 (107)
Rated Engine Power (ECE-R24) hp (kW)	130 (95.6)
Max. Engine Power (ECE-R24) hp (kW)	136 (100)
Constant Power Range (rpm)	1 800 - 2 200
Torque Reserve, percentage (%)	35
Maximum Torque, Nm (at 1 600 engine rpm)	602
Rated Speed (rpm)	2 200
Engine Manufacturer	John Deere Power Systems
Engine Type (4 Cylinder), Displacement	6.8L PowerTech E
Fuel System	High Pressure Common Rail
Fuel Filter System	Two Stage with Heavy Duty Water Separator and Service Indicator Light
Cooling System	Water Cooled Serial Radiator, Fixed Fan System

## TRANSMISSION OPTIONS

CAB Tractors (Standard and Premium)	12F/4R TSS 40 km/h WC (Standard) 24F/12R TSS 40 km/h Hi-Lo PR WC Premium)
Clutch	Wet Clutch (WC)

## REAR AXLE AND FINAL DRIVES

Permissible tread Setting - Front axle, mm	1 636 - 2 036
Permissible tread Setting - Rear axle, mm	1 620 - 2 020
Engagement - Front differential lock	Automatic
Engagement - Rear differential lock	Mechanical
Front Axle type	Mechanical Front Wheel Drive
Rear Axle type	Flanged Rear Axle
Turning Radius, meter (measured without front fenders)	6.00 meter

## ELECTRICAL SYSTEM

Alternator	90 Amps/14.5 Volt
Battery	12 Volt/120 Ah

## STEERING AND BRAKES

Steering Type	Hydrostatic
Steering Collumn	Fixed/Tilttable and Telescopic
Brakes	Heavy Duty Mechanical actuated Service Brakes. Mechanical Park Brake

## HYDRAULIC SYSTEM

Type	Open center Constant Flow
Flow at rated engine speed L/min	60 L/min (Deluxe Package - for 3 x SCV's)
Selective Control Valves (number and position)	2/3 Hydraulic Selective Control Valves, Rear
Maximum Pressure	200 bar

## 3-POINT HITCH REAR

Type	Heavy Duty, mechanical load and depth control, lower link sensing
Category	Category II, Ball-end/Hook-end type hitch arms
Lift Capacity (measured at 610mm behind hook point)	3 300 kg
Maximum Lift Capacity at Hitch Ball ends	5 400 kg
Lower Lift Stabilization	Deluxe Sway Stabilizers

## DRAWBAR

Swinging Drawbar	Cat II with 31 mm pin
Maximum Vertical Load on Drawbar (retracted position)	1 900 kg
Wagon Hitch Drawbar	Cat II with 31 mm pin - Available as field installed kit
Maximum Vertical Load on Wagon Hitch	2 000 kg

## REAR POWER TAKE-OFF (PTO), 540/1 000 RPM

Type	Electro hydraulically operated PTO
Clutch Type	Wet Clutch
PTO Speed Change	Mechanical reversible - stub shaft
PTO Shaft	6 Spline / 540rpm or 21 Spline / 1 000rpm stub shaft
Engine rpm at rated PTO speed	2 085/2 067

## OPERATOR STATION

CAB Tractors (Standard and Premium)	HVAC CAB (heated, vented air-conditioned CAB)
Instrument Panel	Integrated dashboard display

## CAPACITIES

Fuel Tank (L)	255 L
---------------	-------

## DIMENSIONS AND WEIGHTS

Wheelbase (mm)	2 677
Overall Height (mm)	2 940
Overall Length (mm) (with base weight/with front weights)	4 850/4 900
Ground clearance (mm), Center MFWD without front ballast	480
Tractor weight (kg) (shipping weight no ballasting)	4 830
Maximum permissible Gross Weight (kg)	8 000

## WHEELS AND TIRES

Front Wheels (Radial tire technology)	380/85R24
Rear Wheels (Radial tire technology)	460/85R38

This literature has been compiled for broad circulation in sub-Saharan Africa. While general information, pictures and descriptions are provided, some illustrations and text may include finance product options and accessories not available in all regions. Please contact your local dealer for details. John Deere reserves the right to change the specifications, configuration and design of products described in this literature without notice. The green and yellow colour scheme, the leaping deer logo and the JOHN DEERE word mark are trademarks of Deere & Company.



# 9R/RT/RX

SERIES TRACTORS



JOHN DEERE



## 9R

**Engine Type:** JD14 (13.5L), 6 Cylinder, Turbo-charged Diesel

**Rated Hp:** 390hp - 640hp

**Maximum Hp:** 429hp - 691hp

**Transmission:** PowerShift /E18™

**Base Machine Weight:** 11 700kg - 12 700kg

**Hydraulic Capacity:** 208 L/Min - 416 L/Min



## 9RX

**Engine Type:** JD14 (13.5L), 6 Cylinder, Turbo-charged Diesel

**Rated Hp:** 490hp - 640hp

**Maximum Hp:** 539hp - 691hp

**Transmission:** PowerShift /E18™

**Base Machine Weight:** 24 640kg - 30 390kg

**Hydraulic Capacity:** 208 L/Min - 416 L/Min



## 9RT

**Engine Type:** JD14 (13.5L), 6 Cylinder, Turbo-charged Diesel

**Rated Hp:** 490hp - 590hp

**Maximum Hp:** 539hp - 649hp

**Transmission:** PowerShift /E18™

**Base Machine Weight:** 21 512kg - 24 494kg

**Hydraulic Capacity:** 208 L/Min - 416 L/Min



Contact one of our  
reputable dealers today.



This literature has been compiled for broad circulation in Africa Middle East. While general information, pictures and descriptions are provided, some illustrations and text may include finance product options and accessories not available in all regions. Please contact your local dealer for details. John Deere reserves the right to change specification and design of products described in this literature without notice. The green and yellow colour scheme, the leaping deer logo and the JOHN DEERE word mark are trademarks of Deere & Company.

# C120 COMBINE HARVESTER



## Performance

The John Deere C120 combine harvester features cylinder tine separator (CTS) technology with a threshing rotor to maximise threshing and separation capacity, and superior grain quality

Its shoe features a large adjustable chaffer and a large sieve with a total cleaning area of 3.39 m<sup>2</sup> to ensure high harvest speeds to keep pace with high-yielding crops

The John Deere 4045HYC15, turbo-charged, water-cooled engine's power output is 121 kW. It delivers constant, reliable power, keeping the combine productive in all harvesting conditions

## Uptime

Heavy-duty proven combine design with John Deere parts availability worldwide saves time over manual harvesting

The large tank (4.2 m<sup>3</sup>) has an unloading rate of 36 L/sec and the clean grain elevator capacity is sufficient for high-yielding crops

A single-tilt steering column with an instrument panel and display allows the controls to move back or forth with the operator to maximise comfort and productivity

## Cost of operation

Optional hydro-ground drive available to avoid clutch failures and high maintenance costs

Low fuel consumption as the fuel burns more completely and a clean exhaust as less unburned fuel is emitted through the exhaust

Avoid unnecessary refuelling stops with the high capacity fuel tank, and increase effective operating time and revenue



**JOHN DEERE**

## C120 COMBINE HARVESTER SPECIFICATIONS

Cutting width	4.6 m
Drive wheel tread	2.6 m
Steering wheel tread	2.6 m
Threshing cylinder type	Rasp bar and spike tooth
Cylinder width by diameter	1 020 × 610 mm
Separation type	Single-cylinder tine separator
Separation area	1.97 m <sup>2</sup>
Cleaning type	Fan and chaffer
Cleaning area	3.4 m <sup>2</sup>
Grain tank capacity	4.2 m <sup>3</sup>
Engine power	121 kW
Engine type	John Deere 4045PTE turbo-charged, water-cooled engine
Engine emission level	Stage III
Dimensions (length by width by height)	Transport without header: 7.23 x 3.15 x 3.8 m
Total weight	9 180 kg without header, but with straw chopper
Ground speed	Forward: 1.05 - 19.7 km/h, reverse: 2.40 - 5.55 km/h



*This literature has been compiled for broad circulation in sub-Saharan Africa. While general information, pictures and descriptions are provided, some illustrations and text may include finance, product options and accessories not available in all regions. Please contact your local dealer for details. John Deere reserves the right to change specification and design of products described in this literature without notice. The green and yellow colour scheme, the leaping deer logo and the JOHN DEERE word mark are trademarks of Deere & Company.*

# Initiatives Activated by the Team

# Obudu, Cross River State Airport Project - Equipment Sold and Managed by Team



# SMART Campaign Launch - Gwagwalada, Abuja, Nigeria







# SMART Farm Harvest - Gwagwalada, Abuja Nigeria.



# 360 Tractors NECAS Tractors commissioning Event - Jimeta, Yola Adamawa State



# 50 Female Tractor Operator Training - Alluvial and MasterCard Foundation





# 2nd unit of C120 Delivery to Pally Agro Farm - Ogun State, Nigeria



# Team, AGRA, USAID organized event - Mechanization Round table discussion with major Service Providers - **TOOAN, TOHFAN, AFRIMECH, AGROPRO, SCAGRIC, PSALTRY, AGRIDRIVE, others**



# Keynote delivery at the West Africa Agro Fair - Abuja Chamber of Commerce, Nigeria



# Operators Training for Hello Tractor - Abuja, Nigeria







# Field Service Event, Panda Agric Farm- Novum, **Nasarawa State**



## Key Projects under our service:

1. Olam Rice Project
2. Sunti Sugar Farm
3. Flour mills PLC
4. Dangote Farm Projects
5. Arla Foods
6. Tomato Jos Farm
7. Pally Agro Farm
8. Panda Agric Farm
9. Coscharis Farm
10. Ekun Dairy Farm
11. Dufil Farm





#### Contact Information

Chijioko Okoli

[okoli.chijioko@AgcomsInternational.com](mailto:okoli.chijioko@AgcomsInternational.com)

+234(916)9211111



[www.agcomsinternational.com](http://www.agcomsinternational.com)

#### Location:

18 Ziguinchor Street, Wuse Zone 4, Abuja, Nigeria